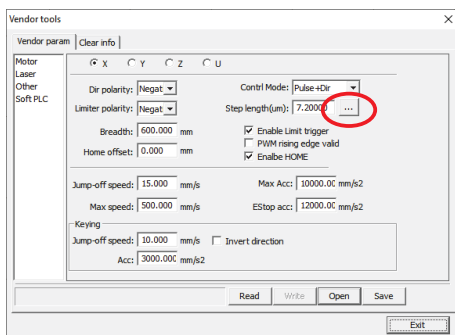


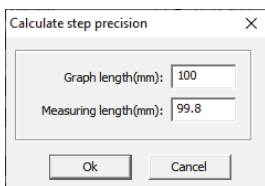
Some of the odd shapes you may get while trying to cut a square or rectangle if the settings are out



Vernier caliper



Vendor Settings menu - click on the 3 dots ...



Squares not square, circles not circular?

This bulletin applies to Ruida controller machines only.

All of our laser machines are set up at the factory - and double checked on installation. However, there may be occasions when the "step length" is off due to movement of the machine, "settling-in" or after a lot of use.

If you cut a square that turns out not to be square, or if your cut objects are not the same size as your artwork, here is what to do :

Make sure you have a Vernier caliper handy to accurately measure the cut length, and draw a square - say 100 x 100mm in RDWorks. Cut this from 3mm MDF. Before removing the square, mark it so you know which way it comes out.

Measure the X axis size (left to right), and the Y axis size (front to back). if they both measure 100mm, your machine is correctly set up - and should cut perfectly.

If not, in RDWorks, go to File/Vendor Settings - the default password is RD8888.

With the machine switched on and connected to your PC, click on "Read" to get the information stored in the Ruida controller.

The X axis is the first selected option. Click on the 3 dots next to Step Length.

The top item (Graph length) is the size you made the drawing - in this case 100mm. Change the bottom item (Measuring length) to the actual size cut - in this case 99.8 - and click on OK.

Now select the Y axis and repeat the procedure.

Next, cut your 100mm square again, and it should be perfect!

This will also apply to circles not being correct, although you will still have to do the rectangle cut to do the calibration.

If this procedure does not solve the issue, your machine may have an out-of-square gantry. This will have to be attended to by one of our technicians.

Please do not change any of the other Vendor Settings without consulting us, as other issues that may be caused by fiddling with settings will be charged for ...

