

Figure 1.

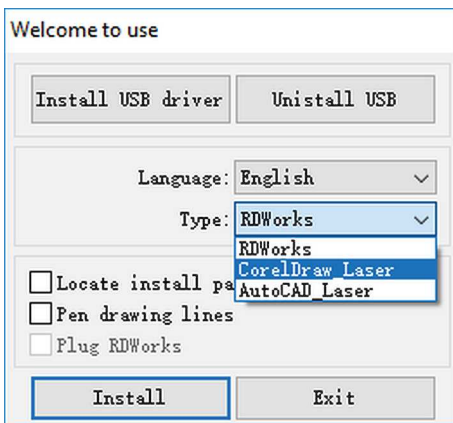


Figure 2.

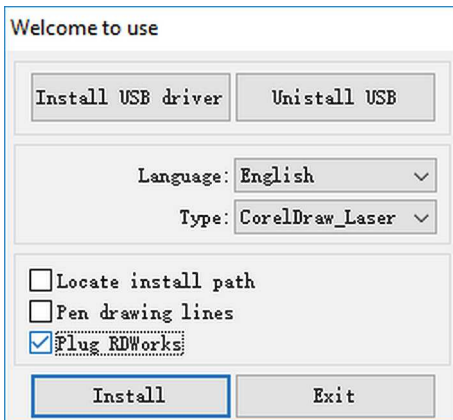


Figure 3.

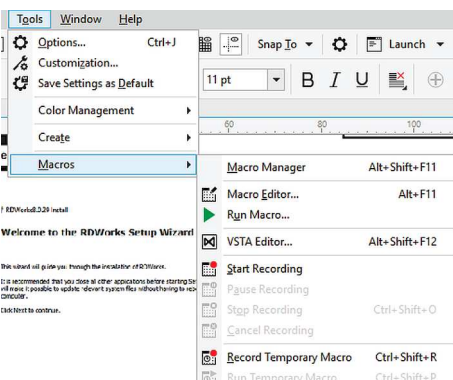


Figure 4.

Using the RDWorks macro in CorelDraw

Whilst it is perfectly feasible to export files from CorelDraw and then import the files to RDWorks, a quicker and simpler option is to integrate RDWorks as a macro.

What this means is that you can run the macro from within CorelDraw, and it will open an instance of RDWorks with your drawing already in it. This also means you can properly use the colour options in CorelDraw to set cut and scan (engrave) options in RDWorks.

The one downside is that if you have been used to exporting and importing, you would probably have kept the .ai (or whatever format you exported to) as well as your original CorelDraw file - which would mean that you have a backup that will not change, as well as your original file. Doing it this way means there is no other file apart from your CorelDraw file - unless you then save the .rld (RDWorks) file as well.

The first step is to run the RDWorks installer - you will find it on the original CD, or on your computer [RDWorksV8Setup(8.x.xx).exe]. See figure 1. on the left.

Instead of using the default install, use the "Type" dropdown to select "CorelDraw Laser". The "Plug RDWorks" checkbox will be greyed out until you select this. See figure 2. on the left.

Now tick the "Plug RDWorks" checkbox. See figure 3. on the left.

Click on "Install". and wait for the installation to finish.

Next, start CorelDraw. Navigate to "Tools, Macros, Run". See figure 4.

There may be a few "GlobalMacros". Select RDWorksXXV8.gms, and from the three choices, select RDWorksV8.UserInit. Press "Run". See figure 5.

You will notice that you have two new icons on your Toolbar. Click on "Laser Running" to open your drawing in RDWorks.

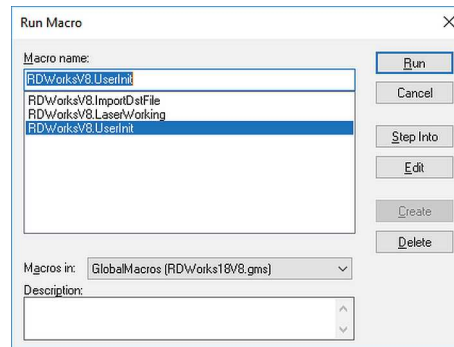


Figure 5.

In older versions of CorelDraw, the icons look like the ones on the left, while in newer versions, you may see icons like those on the right. Hovering over the leftmost icon of either will show "Laser Running".

